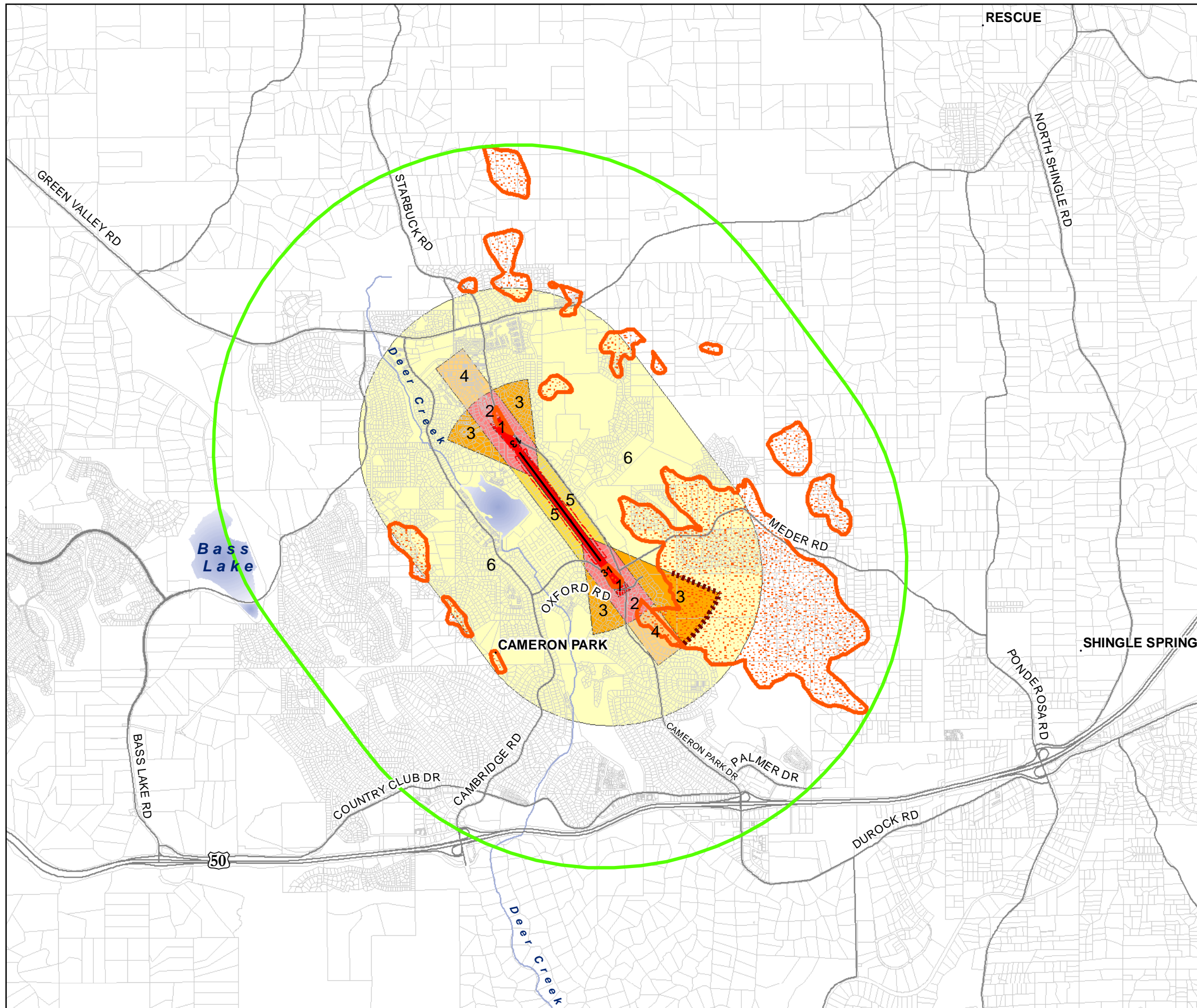


Cameron Airpark Airport Land Use Compatibility Plan

Safety Factors

(June 2012)



Map Feature Key

- Parcels
- Airport Boundary
- Major Roads
- Airport Runway
- Airport Influence Area

Safety Factors Key

- High Terrain Areas
- Generic Safety Zones**
- 1 Runway Protection Zone
- 2 Inner Approach/Departure Zone
- 3 Inner Turning Zone
- 4 Outer Approach/Departure Zone
- 5 Sideline Zone
- 6 Traffic Pattern Zone
- Modifications to Generic Zones

Notes

1. Generic safety zones source: California Airport Land Use Planning Handbook (October 2011).
2. Generic safety zones modified to recognize: High terrain south of the airport.
3. Part 77 source: Federal Aviation Regulations Part 77, Safe, Efficient Use, and Preservation of the Navigable Airspace.
4. Source of Part 77 penetration: 35' added to ground elevation in wooded areas.
5. High Terrain Area consists of locations where ground level is within 35 feet of Part 77 surface.

Map Source: El Dorado County Airport Land Use Commission
Base Data Source: El Dorado County

1 inch = 3,000 feet

